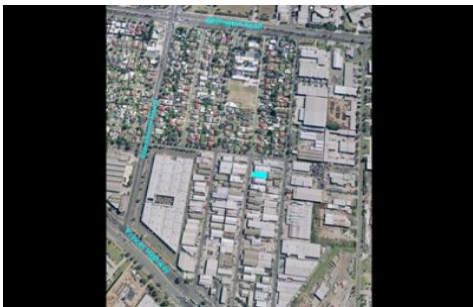




CRABTREES

REAL ESTATE



42 Renver Road CLAYTON VIC

Be quick!! Office warehouse of 327sqm approx on 729sqm approx of land.

- * Could be refurbished and used in exiting layout
- * Great opportunity to build a new building stca
- * Very sought after location in the heart of Clayton
- * Current building has office of 57sqm with 2 roller doors

Don't delay, call Matthew Marenko on 0409 355 123

Price	: \$395,000
Building Size	: 327 sqm
Land Size	: 729 sqm
View	: https://www.crabtrees.com.au/sale/vic/east/clayton/commercial/industrial/5860943

<https://www.crabtrees.com.au>

Crabtrees Real Estate is built on history, reputation and expertise. We offer a level of knowledge others can't match.