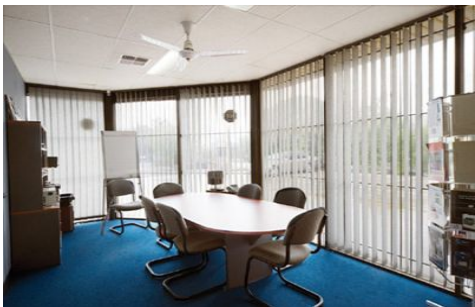




# CRABTREES

REAL ESTATE



\*Stand alone office warehouse of 690sqm

\*Street frontage, well located close to Centre & Clarinda Roads

\*Single & part 2 storey partitioned, air-conditioned & carpeted offices

\*Warehouse of 473 sqm with good internal clearance

\*Motorised container height roller door

\*Heavy power supply (480 amps approx)

\*13 on-site car spaces

For further information please contact Trevor Hanna 0408

**Price** : 865000

**Building Size** : 698 sqm

**View** : <https://www.crabtrees.com.au/sale/vic/south-east/oakleigh-south/commercial/industrial/5861193>



**Chris McKenzie**  
**(03) 95678888**

<https://www.crabtrees.com.au>

Crabtrees Real Estate is built on history, reputation and expertise. We offer a level of knowledge others can't match.