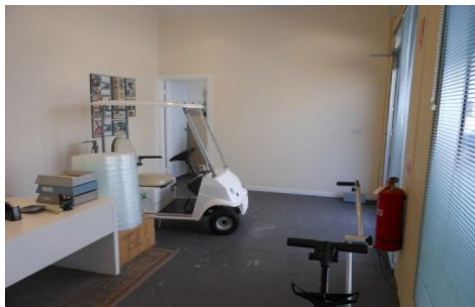




# CRABTREES

REAL ESTATE



### 33 Keysborough Close (Fiveways Business Centre) KEYSBOROUGH VIC

NEED MORE SPACE?  
NEAR NEW OFFICE/WAREHOUSE

- \* Near new Buildings situated super close to Cheltenham Road, Springvale Road & Westall Extension.
- \* Motorised Roller Door access
- \* 3 On Site Car spaces
- \* 193m<sup>2</sup> approximately of high clearance warehouse
- \* 34sqm approximately of office/showroom
- \* Bonus Mezzanine
- \* Shower facilities
- \* 'Within walking distance to officeworks & bunnings

Call your exclusive agent at Crabtrees Real Estate:  
Stuart Gill 0417 322 080  
Andrew Loudon 0422 618 975

**Price** : 342000  
**Building Size** : 227 sqm  
**View** : <https://www.crabtrees.com.au/sale/vic/south-east/keysborough/commercial/industrial/5861778>

<https://www.crabtrees.com.au>

Crabtrees Real Estate is built on history, reputation and expertise. We offer a level of knowledge others can't match.