



# CRABTREES

REAL ESTATE



## 1/8 Precision Lane NOTTING HILL VIC

10 

Brand new boutique office warehouse development currently under construction and due for completion late 2016.

Located only moments to the M1 freeway and surrounded by major international organisations such as Mercedes-Benz, NEC, Adidas & Monash University these buildings will impress!

### Features:

- + 322sqm Office Warehouse
- + Includes first floor mezzanine office of 46sqm
- + Office areas are fully carpeted and air-conditioned throughout
- + Unisex disabled amenities, including shower with attached kitchenette

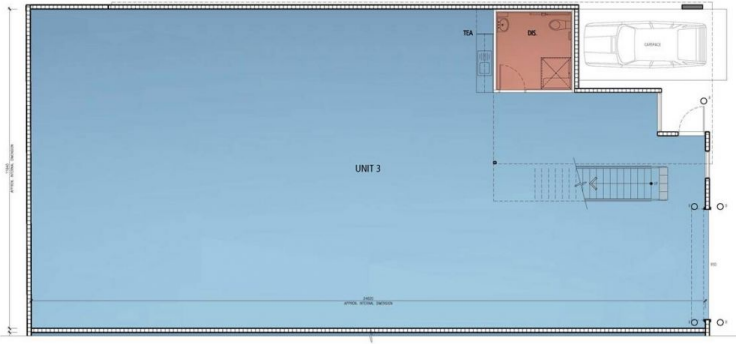
**Price** : Leased  
**Building Size** : 322 sqm  
**View** : <https://www.crabtrees.com.au/lease/vic/east/notting-hill/commercial/industrial/5862546>



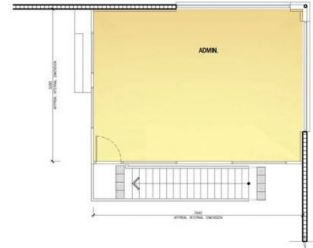
**Luke Pitcher**  
**(03) 95678888**

<https://www.crabtrees.com.au>

Crabtrees Real Estate is built on history, reputation and expertise. We offer a level of knowledge others can't match.



WAREHOUSE 3 PLAN  
SCALE: 1/32" = 1'-0"



OFFICE 3 MEZZANINE PLAN  
SCALE: 1/32" = 1'-0"

Proposed Office Warehouse  
Precision International

MARKETING  
UNIT 3



DATE: March, 2015  
DRAWN BY: MK  
SCALE: 1/16" = 1'-0"  
NO: 13057  
MK03 8

