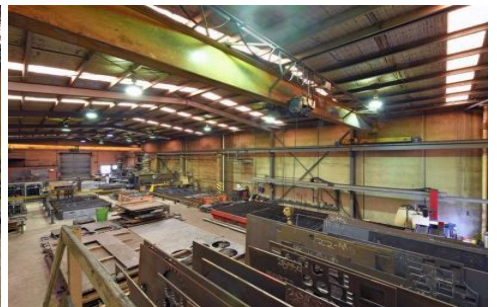




CRABTREES

REAL ESTATE



26-30 Bendix Drive CLAYTON VIC

This high clearance factory warehouse with cranes is well located off Carinish Road, near Centre Road and in close proximity to Clayton Road and Princes Hwy.

From this central location you are close by to Clayton's retail strip, railway station and Monash Medical Centre.

Property Features:

- + High factory warehouse of 743m²
- + Two heavy duty cranes (4 tonne and 5 tonne)
- + Heavy power supply
- + Large securely fenced car park/yard

Price : Contact Agent
Building Size : 793 sqm
Land Size : 1196 sqm
View : <https://www.crabtrees.com.au/sale/vic/east/clayton/commercial/industrial/5862780>

<https://www.crabtrees.com.au>

Crabtrees Real Estate is built on history, reputation and expertise. We offer a level of knowledge others can't match.