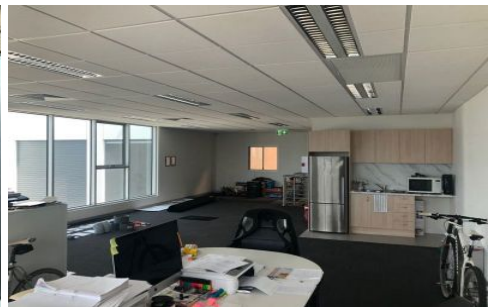
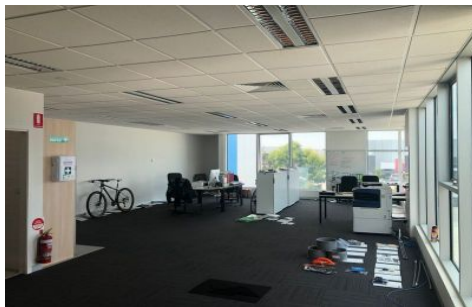




CRABTREES

REAL ESTATE



1/22 Canterbury Road Braeside VIC

This office warehouse located in the heart of Braeside has everything you need.

Features Include:

- + 566 sqm total building area
- + Like new
- + Secure parking
- + Security fencing
- + Container height roller door
- + High clearance warehouse
- + Only a stones throw to Governor Road, Boundary Road and Springvale Road

Crabtrees Real Estate is built on history, reputation and expertise.

We offer a level of knowledge others can't match.

Price : \$60,000 pa
Building Size : 566 sqm
View : <https://www.crabtrees.com.au/lease/vic/bayside/braeside/commercial/industrial/5863187>



Joe Monea
(03) 95678888



Luke Pitcher
(03) 95678888

<https://www.crabtrees.com.au>

Crabtrees Real Estate is built on history, reputation and expertise. We offer a level of knowledge others can't match.