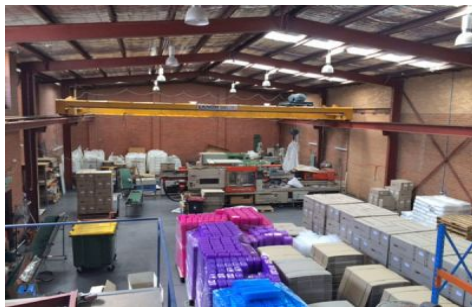
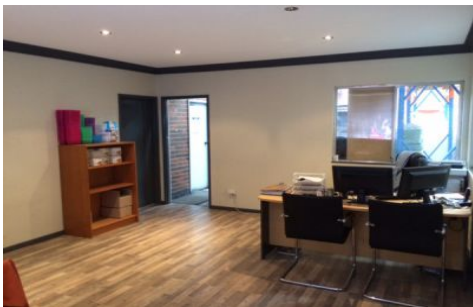




CRABTREES

REAL ESTATE



67 Henderson Road Clayton VIC

Situated with direct access to Wellington & Blackburn Roads, this office warehouse is close to all major arterial roads and local amenities.

Property Features:

- + Good internal clearance of up to 7m*
- + 10 tonne traveling crane
- + 2 level office of 100sqm featuring a mix of timber and carpeted flooring
- + Split system air-conditioning
- + Above average power supply*

Price : \$50,000 pa
Building Size : 568 sqm
View : <https://www.crabtrees.com.au/lease/vic/east/clayton/commercial/industrial/5863190>



Joe Monea
(03) 95678888

<https://www.crabtrees.com.au>

Crabtrees Real Estate is built on history, reputation and expertise. We offer a level of knowledge others can't match.