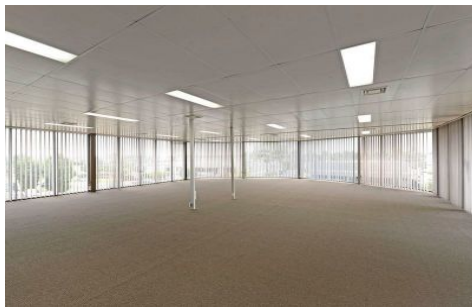




CRABTREES

REAL ESTATE



51 Henderson Road ROWVILLE VIC

Strategically located on the corner of Henderson Road and Laser Drive with only a short distance to Kelletts Road, Ferntree Gully Road, Wellington Road and EastLink.

Features:

- + Includes first floor carpeted and air conditioned office of 200sqm
- + Great onsite parking and truck access
- + Good warehouse height with excellent natural light
- + Container height roller door
- + Well appointed staff amenity on both floors

Price : annual
Building Size : 1100 sqm
Land Size : 2002 sqm
View : <https://www.crabtrees.com.au/lease/vic/east/rowville/commercial/industrial/5863324>

<https://www.crabtrees.com.au>

Crabtrees Real Estate is built on history, reputation and expertise. We offer a level of knowledge others can't match.