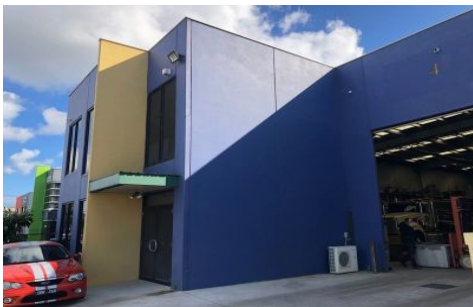




CRABTREES

REAL ESTATE



4 Sahra Grove CARRUM DOWNS VIC

Located in the heart of Carrum Downs sits this perfect office/warehouse perfect for your needs

Features Include

- + 680sqm total building area
- + Includes two story offices
- + Great on site parking
- + Secure yard/delivery area
- + Container height roller shutter door
- + Moments to both Eastlink and Peninsula link

Crabtrees Real Estate is built on history, reputation and expertise.

We offer a level of knowledge others can't match.

Our team strategically located across the eastern and

Price : annual
Building Size : 680 sqm
View : <https://www.crabtrees.com.au/lease/vic/bayside/carrum-downs/commercial/offices/5863332>

<https://www.crabtrees.com.au>

Crabtrees Real Estate is built on history, reputation and expertise. We offer a level of knowledge others can't match.