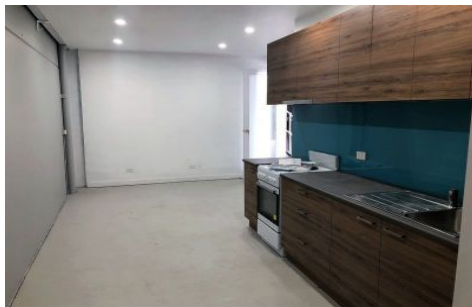




CRABTREES

REAL ESTATE



14 Beach Avenue MORDIALLOC VIC

8 🚗

Price : \$45,000 annual
Building Size : 444 sqm
Land Size : 698 sqm
View : <https://www.crabtrees.com.au/lease/vic/bayside/mordialloc/commercial/offices/5863339>

<https://www.crabtrees.com.au>

Crabtrees Real Estate is built on history, reputation and expertise. We offer a level of knowledge others can't match.