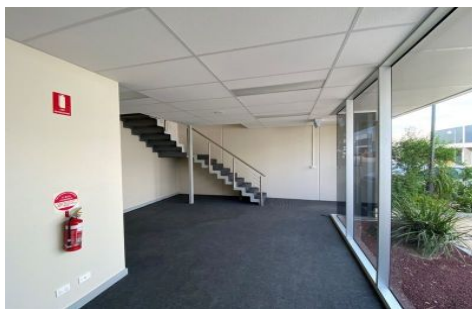




CRABTREES

REAL ESTATE



13/820 Princes Highway Springvale VIC

Perfect office warehouse on Princes Highway close to Springvale Road.

Ready To Go!

Features include:

- + 241 sqm total building area
- + High clearance warehouse: 197 sqm
- + Container height roller door
- + Moments to EastLink
- + Air conditioned offices
- + On site parking

Crabtrees Real Estate is built on history, reputation and expertise.

Price : \$32,000 pa
Building Size : 241 sqm
View : <https://www.crabtrees.com.au/lease/vic/south-east/springvale/commercial/industrial/5863356>



Pana Kritikos
(03) 95678888



Saul Akoka
(03) 95678888

<https://www.crabtrees.com.au>

Crabtrees Real Estate is built on history, reputation and expertise. We offer a level of knowledge others can't match.