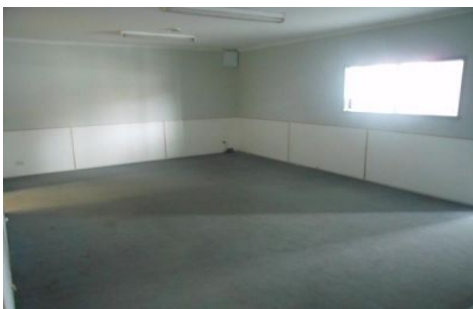




CRABTREES

REAL ESTATE



9/810-818 Princes Highway SPRINGVALE VIC

Situated on Princes Highway in this modern industrial business park is this neat and tidy office warehouse.

Features Include:

- + 298sqm total area approximately
- + Includes 64sqm approximately of light & bright office space
- + Good internal clearance
- + Male & Female toilets
- + Container height roller door
- + 4 on site car spaces
- + Inspect Today

For further details and inspections contact:

Casper Janholt 0448 026 186
Andrew Loudon 0422 618 975

Price : \$25500
Building Size : 298 sqm
View : <https://www.crabtrees.com.au/lease/vic/south-east/springvale/commercial/industrial/5863440>

<https://www.crabtrees.com.au>

Crabtrees Real Estate is built on history, reputation and expertise. We offer a level of knowledge others can't match.