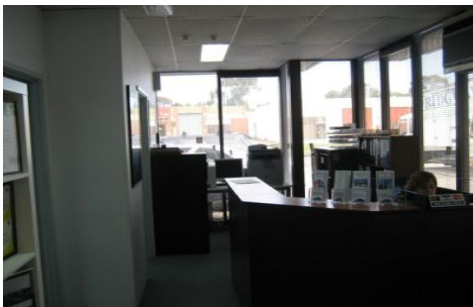




# CRABTREES

REAL ESTATE



**AVAILABLE NOW:**

- \* Good brick factory/ warehouse with street frontage
- \* Well located to Governor Road and Boundary Road.
- \* Offices are fully glassed partitioned/ reverse cycled air conditioning /heating system
- \* Kitchen/tea room.
- \* Tonnes of Natural light to warehouse
- \* 4.1m RSD access
- \* 3 phase power and ample on-site parking.

for further details contact:  
Tony Aminian 0413 516 193  
Andrew Loudon 0422 618 975

**Price** : annual  
**Building Size** : 624 sqm  
**View** : <https://www.crabtrees.com.au/lease/vic/bayside/mentone/commercial/industrial/5863499>



**Grant Tishler**  
**(03) 95678888**

<https://www.crabtrees.com.au>

Crabtrees Real Estate is built on history, reputation and expertise. We offer a level of knowledge others can't match.