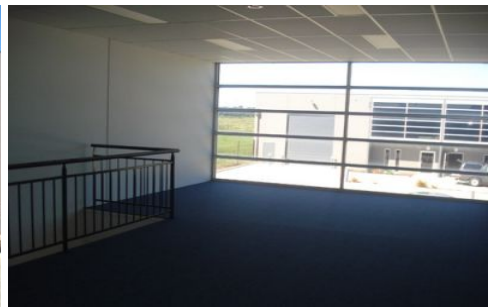
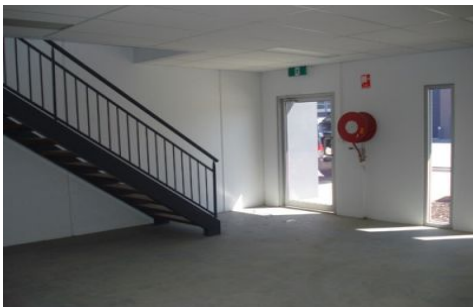




# CRABTREES

REAL ESTATE



Good as new office/warehouses in central Hallam location...

Unit 9 includes:

- + 55sqm 1st floor office
- + Clear span warehouse
- + Great internal clearance
- + Ample allocated car parking
- + Security gates to estate
- + Industrial 1 zoning

Sizes from 440sqm - 505sqm

AVAILABLE NOW!!!

Tony Aminian 0413 516 193

**Price** : annual  
**Building Size** : 505 sqm  
**View** : <https://www.crabtrees.com.au/lease/vic/south-east/hallam/commercial/industrial/5863540>

<https://www.crabtrees.com.au>

Crabtrees Real Estate is built on history, reputation and expertise. We offer a level of knowledge others can't match.