



14/1866 Princes Highway Clayton VIC



Beautifully appointed office/warehouse of approximately 440 sqm.

Features include:

- + Quality partitioned first floor offices of 120 sqm
- + Offices contain both heating and air conditioning
- + Kitchen facilities, including dishwasher
- + Excellent internal height 7 metres approx
- + Motorized container access roller door
- + Light and bright warehouse of 320 sqm
- + 6 on site car spaces

Convenient access to Princes Highway, Monash Freeway and Westall Road Bypass.

Excellent property in sought after estate.

Price : 68,000p/a++ pa
Building Size : 440 sqm
View : <https://www.crabtrees.com.au/lease/vic/east/clayton/commercial/industrial/5863698>

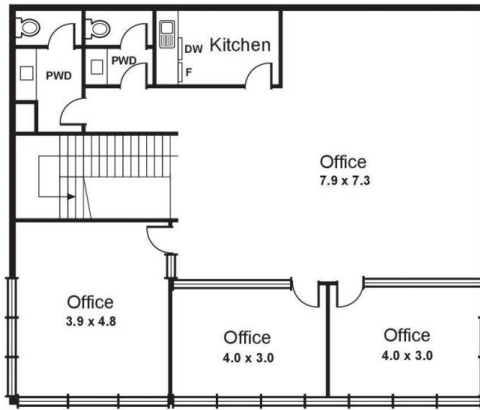


Chris McKenzie
(03) 95678888

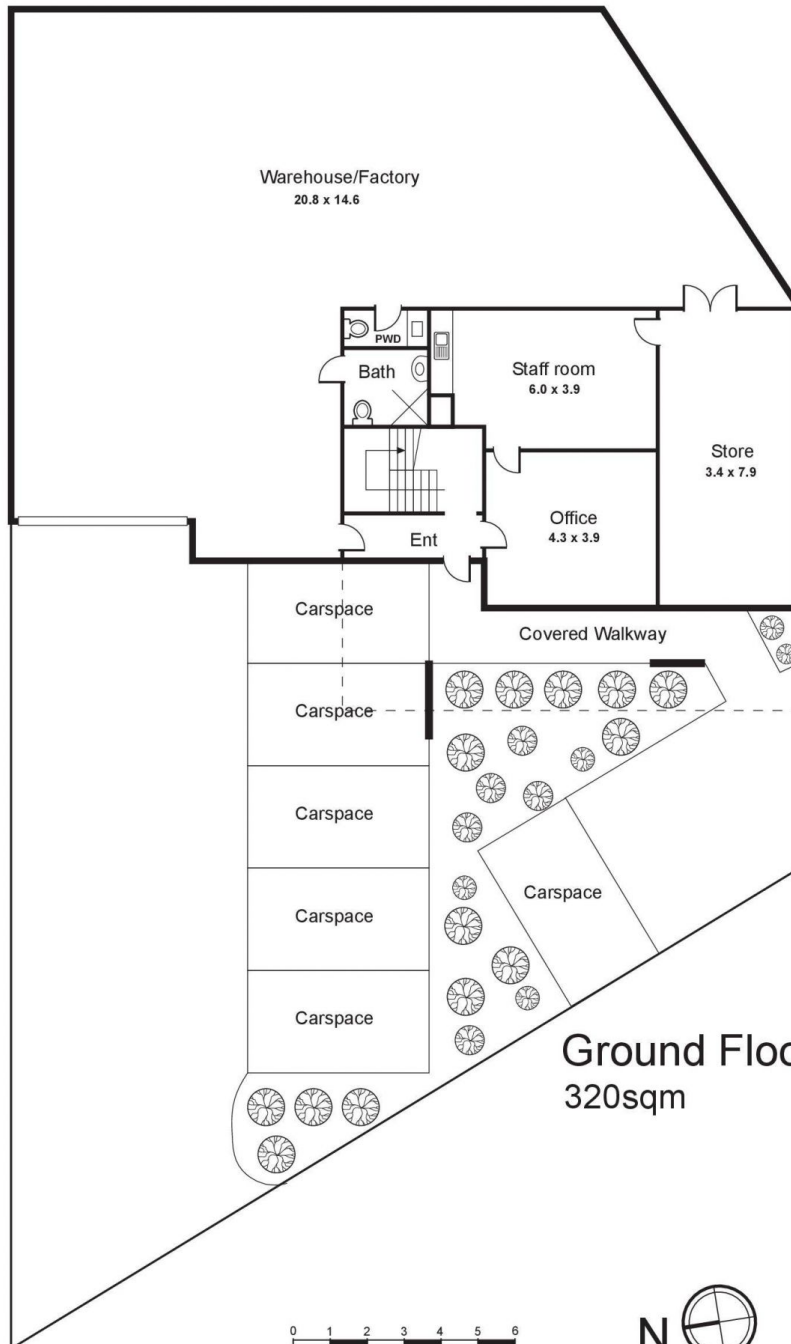


Joe Monea
(03) 95678888

14/1866 Princes Highway, Clayton



First Floor
120sqm



Ground Floor
320sqm

0 1 2 3 4 5 6
Scale in metres approx.

