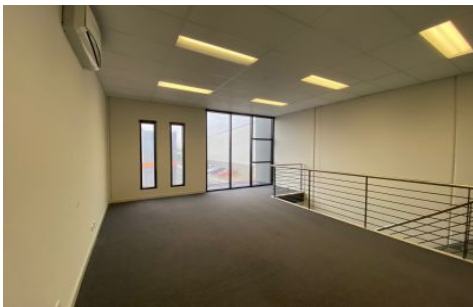




CRABTREES

REAL ESTATE



20/19 Cornhill Street Ferntree Gully VIC

Located within a tightly held development and within close proximity to Burwood Highway and local amenities including parklands, walking trails, shopping centre and schools!

Featuring:

- + Offices over two floors totalling 175 sqm with flexible open plan spaces
- + Clear warehousing of 175 sqm with container height roller shutter door
- + Large tearoom/ additional open plan area
- + Separate male and female amenities

Price : \$35,000 pa
Building Size : 350 sqm
View : <https://www.crabtrees.com.au/lease/vic/east/ferntree-gully/commercial/industrial/5863712>



Pana Kritikos
(03) 95678888

<https://www.crabtrees.com.au>

Crabtrees Real Estate is built on history, reputation and expertise. We offer a level of knowledge others can't match.