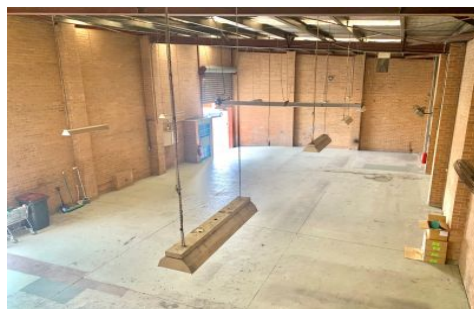
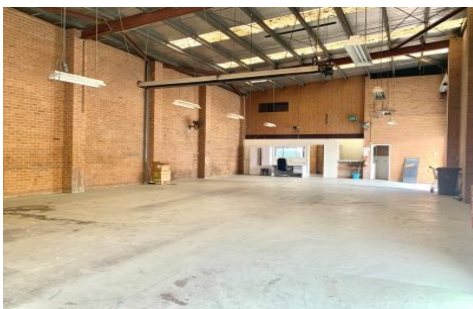




CRABTREES

REAL ESTATE



12 Burlington Street Oakleigh VIC

Crabtrees Real Estate are pleased to offer 12 Burlington Street, Oakleigh for Lease.

Situated on a prime corner only a 1 minute walk to Oakleigh Central and train station, this functional warehouse / factory with offices has a total area of 324 sqm and features:

- + Dual roller doors
- + Secure on site parking
- + High warehouse
- + First floor air conditioned offices
- + Unbelievable location enjoying lots of passing traffic and

Price : \$40,500 pa
Building Size : 324 sqm
Land Size : 392 sqm
View : <https://www.crabtrees.com.au/lease/vic/east/oakleigh/commercial/industrial/6142415>



Pana Kritikos
(03) 95678888



Joe Monea
(03) 95678888

<https://www.crabtrees.com.au>

Crabtrees Real Estate is built on history, reputation and expertise. We offer a level of knowledge others can't match.