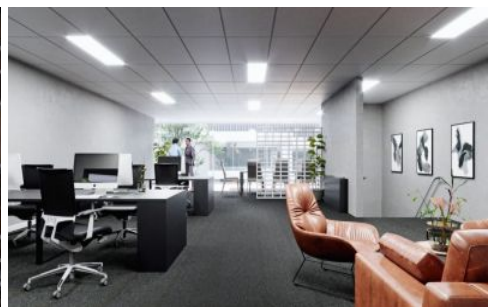




# CRABTREES

REAL ESTATE



## 26 Rushdale Street Knoxfield VIC

A state of the art business park consisting of twelve (12) office/warehouses that can be purchased individually or in one line.

Property features include:

- + Areas available from: 195 - 1,134 sqm
- + Brand new construction depreciation benefits
- + Container access + loading/unloading
- + Ample car parking
- + Design flexibility
- + Construction commencing

Location features:

- + 350m\* from Ferntree Gully Road
- + 5 minute\* drive to M3 East Link
- + 3.15km\* from Westfield Knox
- + Surrounding occupiers include PFD Foods, Miele and

**Price** : Contact Agent

**View** : <https://www.crabtrees.com.au/sale/vic/east/knoxfield/project/other/6281746>



**Megan Miles**  
0401 288 800

<https://www.crabtrees.com.au>

Crabtrees Real Estate is built on history, reputation and expertise. We offer a level of knowledge others can't match.