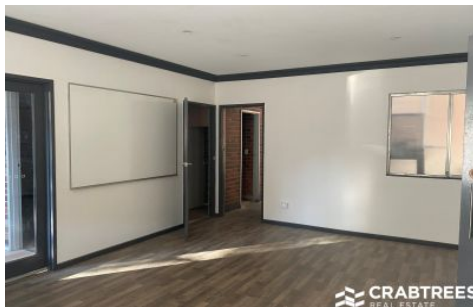




CRABTREES

REAL ESTATE



67 Henderson Road Clayton VIC

Crabtrees Real Estate are pleased to offer 67 Henderson Road, Clayton for Lease.

Situated with direct access to Wellington & Blackburn Road, this office warehouse of 568 sqm is located close to all major arterial roads and local amenities.

Property Features:

- + Good internal clearance of up to 7m*
- + 10 tonne traveling crane
- + 2 level office of 100 sqm featuring a mix of timber and carpeted flooring
- + Split system air-conditioning

Price : CONTACT AGENT pa
Building Size : 568 sqm
View : <https://www.crabtrees.com.au/lease/vic/east/clayton/commercial/industrial/6516745>



Luke Pitcher
(03) 95678888



Joe Monea
(03) 95678888

<https://www.crabtrees.com.au>

Crabtrees Real Estate is built on history, reputation and expertise. We offer a level of knowledge others can't match.