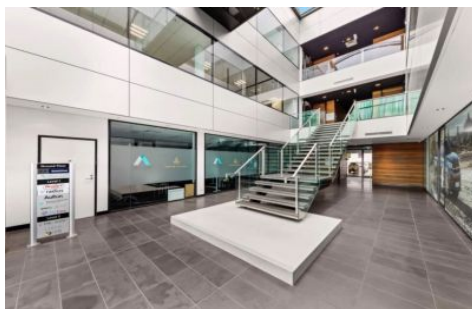




CRABTREES

REAL ESTATE



424 Warrigal Road Moorabbin VIC

Join The South Easts Premier Business Park Parkview Estate.

AREA BREAKDOWN:

Ground Floor, Suite 2

Area: 360sqm

Cars: 12

Rent: \$310/m² (net)

Comments: Existing fit-out - Partitioned offices / meeting rooms, kitchenette, desks and chairs - dual entrances & separate amenities

First Floor, Tenancy 105

Area: 582sqm

Cars: 20

Rent: \$300/m² (net)

Price : CONTACT AGENT

View : <https://www.crabtrees.com.au/lease/vic/bayside/moorabbin/commercial/offices/6852552>



Elise Betts
0407 864 319

<https://www.crabtrees.com.au>

Crabtrees Real Estate is built on history, reputation and expertise. We offer a level of knowledge others can't match.