

51-55 Bendix Drive Clayton VIC

Crabtrees Real Estate are pleased to offer 51-55 Bendix Drive, Clayton for PRIVATE SALE or LEASE.

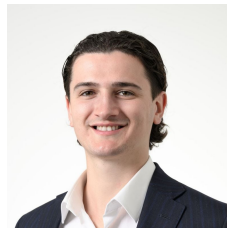
Situated in the highly sought after Clayton industrial precinct, this 880 sqm warehouse facility, situated on a 1,284 sqm mixed use zoned land parcel will suit a wide range of businesses, looking to be in an unbeatable location.

Located within the Monash Planning Scheme, the property is zoned Mixed-Use, allowing for up to 5-level development (STCA). A planning report is available upon request.

Features:

- + 880 sqm factory/ warehouse
- + Great warehouse height
- + 125 sqm offices & small showroom

Price : CONTACT AGENT
Building Size : 880 sqm
Land Size : 1284 sqm
View : <https://www.crabtrees.com.au/sale/vic/east/clayton/commercial/industrial/8083465>



Pana Kritikos
(03) 95678888



Chris McKenzie
(03) 95678888